

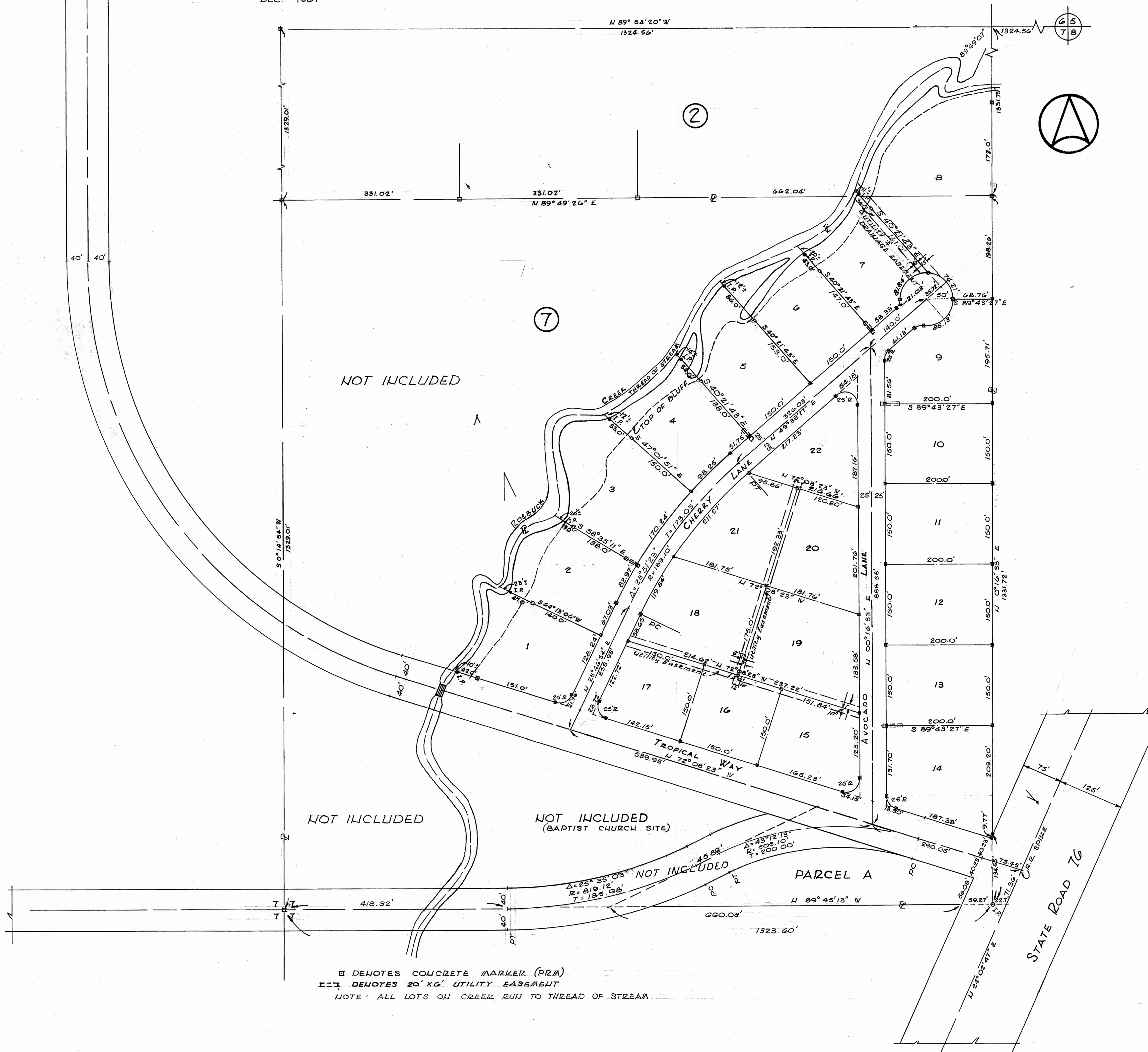
TROPICAL ESTATES

SECTION I

A SUBDIVISION OF THAT PART OF TRACTS 2 AND 7 OF SECTION 7, TWP 39 S. RGE. 41 E. OF TROPICAL FRUIT FARMS SUBDIVISION RECORDED IN PLAT BOOK 3 PAGE 6 PALM BEACH COUNTY RECORDS LYING SOUTHERLY OF THE CENTER OF ROEBUCK CREEK.

BY:
WOLLOUGONG, INC.
DEC. 1967

STUART, FLA.
SCALE: 1"=100'



125811

STATE OF FLORIDA
COUNTY OF MARTIN
I, DOROTHY PIERCE County Clerk of
Martin County, Florida, hereby certify
that this plat has been examined and
that it complies in form with all the
requirements of the Statutes of
Florida pertaining to maps and plats,
and that this plat has been filed
for record in Plat Book 4, Page 63,
Public Records of Martin County,
Florida, this 22 day of DECEMBER, A.D. 1967.
By: Dorothy Pierce
Clerk of Circuit Court

DEDICATION STATE OF FLORIDA COUNTY OF MARTIN

Wollogong, Inc., a Florida Corporation, by its duly elected President, Joseph S. Greenlees and by its duly elected Secretary William E. Scott acting by and with the authority of its Board of Directors, certify ownership by said Corporation of the property described herein, and does hereby dedicate and set apart all of the streets, walks, alleys, thoroughfares, parks and other open spaces, canals and drainage or other easements shown on this plat to the use of the general public forever.

IN WITNESS WHEREOF, the undersigned Corporation has caused these presents to be executed by its President and attested by its Secretary.

ATTEST
Witness: [Signature]
Witness: [Signature]
BY: Joseph S. Greenlees President
William E. Scott Secretary

STATE OF FLORIDA COUNTY OF MARTIN

Before me, the undersigned Notary Public, personally appeared Joseph S. Greenlees, President and William E. Scott Secretary of Wollogong, Inc., a Florida Corporation, to me known to be the individuals described in and who executed the foregoing certificate of dedication, and they duly acknowledge before me that they executed the same, as such officers for and in behalf of said Corporation.

WITNESS my hand and official seal at Martin County Florida, this 11 day of DECEMBER A.D. 1967.

[Signature]
Notary Public, State of Florida
at large. My Commission expires 2/15/68

CONSENT OF MORTGAGE STATE OF FLORIDA COUNTY OF MARTIN

The undersigned Mortgagee hereby joins and consents to the areas dedicated hereon which they might claim under the mortgage held by them on said property.

IN WITNESS WHEREOF, the undersigned Corporation has caused these presents to be executed by its President and attested by its Secretary.

ATTEST
Witness: [Signature]
Witness: [Signature]
BY: South Fork Ranch, Inc.
David J. Greenlees President
Joseph S. Greenlees Secretary

STATE OF FLORIDA COUNTY OF MARTIN

Before me, the undersigned Notary Public, personally appeared David J. Greenlees, President and Joseph S. Greenlees, Secretary of South Fork Ranch Inc., a Florida Corporation, to me known to be the individuals described in and who executed the foregoing certificate of dedication, and they duly acknowledge before me that they executed the same, as such officers for and in behalf of said Corporation.

WITNESS my hand and official seal at Martin County, Florida, this 11 day of December A.D. 1967.

[Signature]
Notary Public, State of Florida, at large. My Commission expires 2/15/68

SURVEYOR'S CERTIFICATE

I, the undersigned Registered Land Surveyor, hereby certify that on DEC. 7, 1967, this property was surveyed and this plat is a true representation of the lands described and shown, to the best of my knowledge and belief, and that permanent reference monuments have been placed as required by the Statutes of the State of Florida thereunto appertaining.

Signature: D. P. DeBerry
D. P. DEBERRY
Registered Land Surveyor
Florida Certificate No. 1446

Date of Survey: December 7, 1967

COMMISSION APPROVAL STATE OF FLORIDA COUNTY OF MARTIN

It is hereby certified that this plat has been officially approved for record by the Board of County Commissioners of the County of Martin, Florida, this 22 day of December A.D. 1967.

APPROVED: [Signature] Acting County Engineer
Florida Certificate No. 1594
[Signature] Chairman Planning & Zoning Commission
[Signature] Chairman Board of County Commissioners